



Calgary has an impressive park system that supports a wide array of biodiversity that is important for ecological and human health. As Calgary continues to develop, information on urban wildlife is needed to maintain biodiversity. The Calgary Captured program aims to monitor medium to large mammals using motion activated cameras in our parks and riparian corridors.

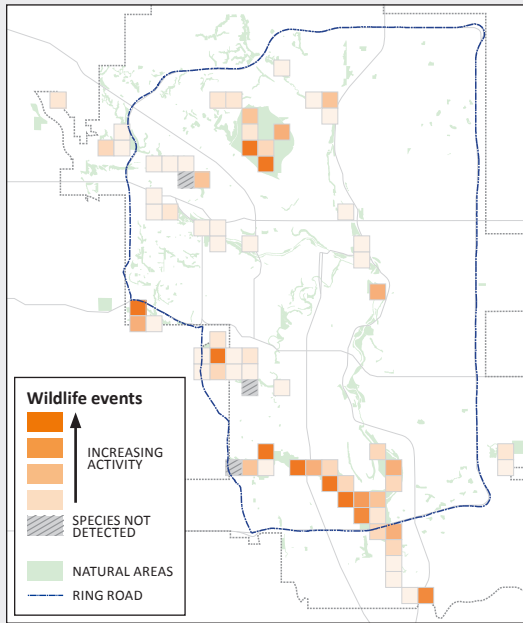
Calgary Captured provides insights into wildlife presence, movement and responses to human activity.

THIS SUMMARY INCLUDES URBAN WILDLIFE DATA COLLECTED ON MOTION ACTIVATED CAMERAS FROM MAY 2017 TO MAY 2020.

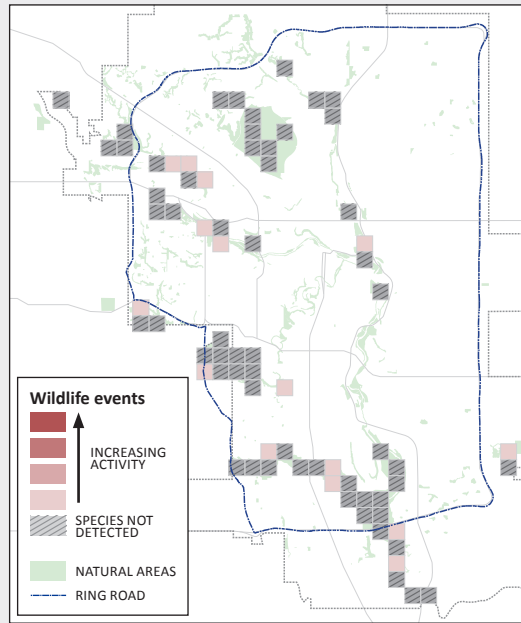
WHO USES OUR PARKS?

We documented a wide diversity of wildlife in our parks including white-tailed deer, mule deer, coyote, raccoon, red fox, bobcat, skunk, and even moose, badger, bear, and cougar.

WHITE-TAILED DEER ACTIVITY RATE



RED FOX ACTIVITY RATE

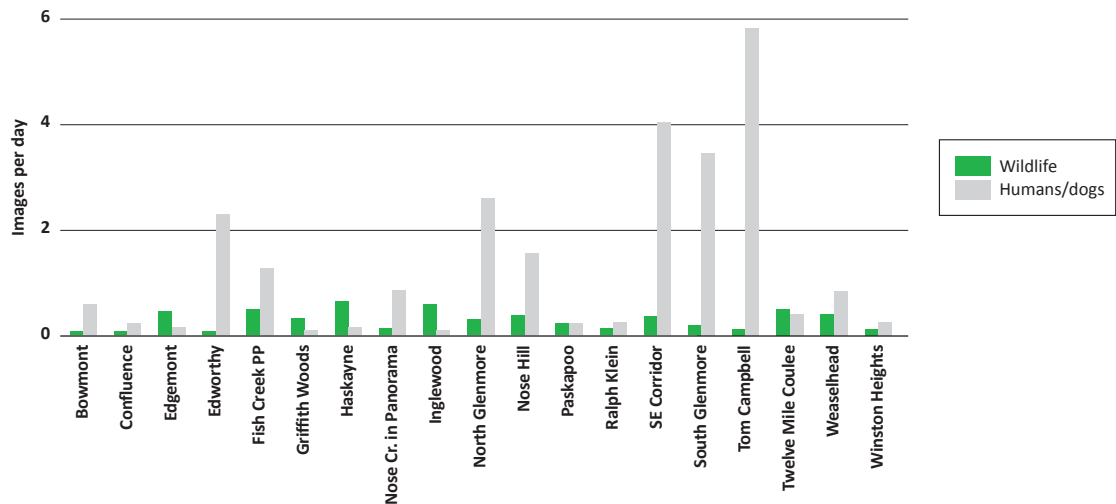


We documented wildlife in all parks, the most common wildlife images were **deer (77%)** and **coyote (18%)**.

Parks located within our riparian corridors such as the Bow River, Fish Creek and Elbow River, had higher diversity of mammals documented, highlighting the importance of these areas.

HUMAN AND WILDLIFE IMAGES PER PARK

Calgarians really love spending time in their parks – although cameras are set up off the beaten path – **75% of images were of people and pets (all images with people are deleted)**.



HOW DOES OUR ACTIVITY IMPACT WILDLIFE?

Wildlife adjust their behaviour and park use in response to the presence of people and pets:

- Wildlife tends to be more active at night in parks with high daily numbers of people and pets.
- In general, mule deer and coyote do not alter their behaviour around people and pets.
- In general, bear, cougar and red fox activity in parks is almost exclusively in the night as a reflection of the daily human and pet activity.
- Cameras recorded approximately 20,000 images of off-leash dogs – 89% of these images were in on-leash dog areas.

Time of wildlife activity compared to humans or dogs off-leash

White-tailed deer are **less sensitive** to humans and dogs



Red fox are **sensitive** to humans and dogs



Cougar are **very sensitive** to humans and dogs

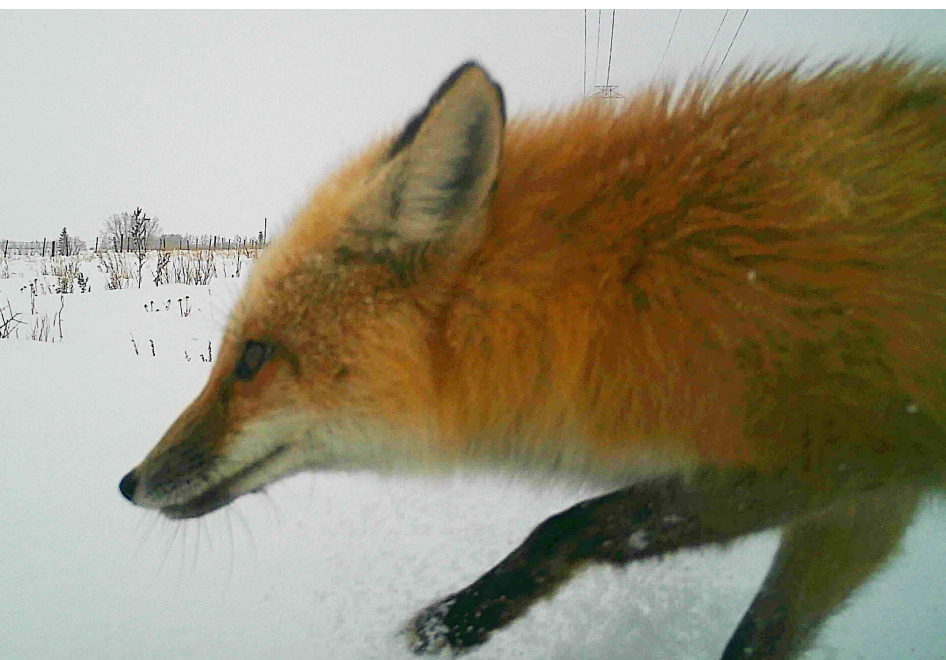


HOW CAN YOU BETTER CO-EXIST WITH OUR WILDLIFE NEIGHBOURS?

Widespread presence of wildlife throughout the City parks system highlights the responsibility we have to balance park use with wildlife needs.

You can help keep pets and wildlife safe:

- Respect park closures and signage
- Give wildlife space
- Visit parks during daylight hours
- Use maintained trails
- Bring your dogs to one of Calgary's many off-leash areas – [learn where the one closest to you is.](#)



Calgary Captured is a collaborative partnership with the Miistakis Institute, the City of Calgary, Alberta Environment and Parks, Friends of Fish Creek Provincial Park Society and Weaselhead/Glenmore Park Preservation Society.

THANK YOU TO The Calgary Foundation, Alberta Ecotrust, and TD Friends of the Environment Foundation for their generous support of Calgary Captured. And thank you to our citizen scientists for their contributions in camera management and image classification.



Citizens engaged in urban wildlife monitoring